

Vegetation Management

MARIPOSA COUNTY

May 24, 2022



Presentation Topics

- ✓ Wildfire Safety Objectives in 2022
- ✓ Vegetation Management Overview
- ✓ State and Regulatory Requirements
- ✓ Vegetation Management Programs
- ✓ Customer Engagement
- ✓ Customer and Community Resources



MITIGATE WILDFIRE RISK



MINIMIZE CUSTOMER IMPACT



MAXIMIZE SITUATIONAL AWARENESS



Preventing Potential Wildfires

- Undergrounding
- Expanding Enhanced Powerline Safety Settings (EPSS)
- Refining and reducing impacts of Public Safety Power Shutoffs (PSPS)
- Conducting 1,800 miles of enhanced vegetation management
- Installing additional HD cameras and weather stations

Better Supporting Customers

- Expanding customer eligibility
- Support for vulnerable customers through our Fixed Power Program
- Expanded local information through the PSPS Planning Map and [pge.com](https://www.pge.com)
- Listening through our *Report It* mobile safety app





Keeping Trees Away from Powerlines for Safety and Reliability

PG&E's Vegetation Management Programs:

- Trim trees to meet or exceed state vegetation and fire safety standards.
- Cut down dead, diseased, or dying trees that pose a risk to powerlines.
- Evaluate the condition of trees that may need to be addressed if they are tall enough to strike powerlines or equipment.
- Trim or cut down trees and shrubs to increase defensible space or construct stronger, more resilient electric equipment.



State and Regulatory Requirements

PG&E is legally required to maintain minimum clearances and address and abate trees that pose a hazard to our electric powerlines and facilities according to the following regulations:

California Public Utilities Commission* (CPUC)	<u>General Order 95, Rule 35</u>
California Public Resources Code (PRC)	<u>Section 4292</u>
	<u>Section 4293</u>

**Under [Article XII](#) of the California Constitution, PG&E's vegetation management work is under the sole jurisdiction of the CPUC, which preempts local discretionary authority over public utility projects.*

Routine Vegetation Management Program

When This Work Occurs:

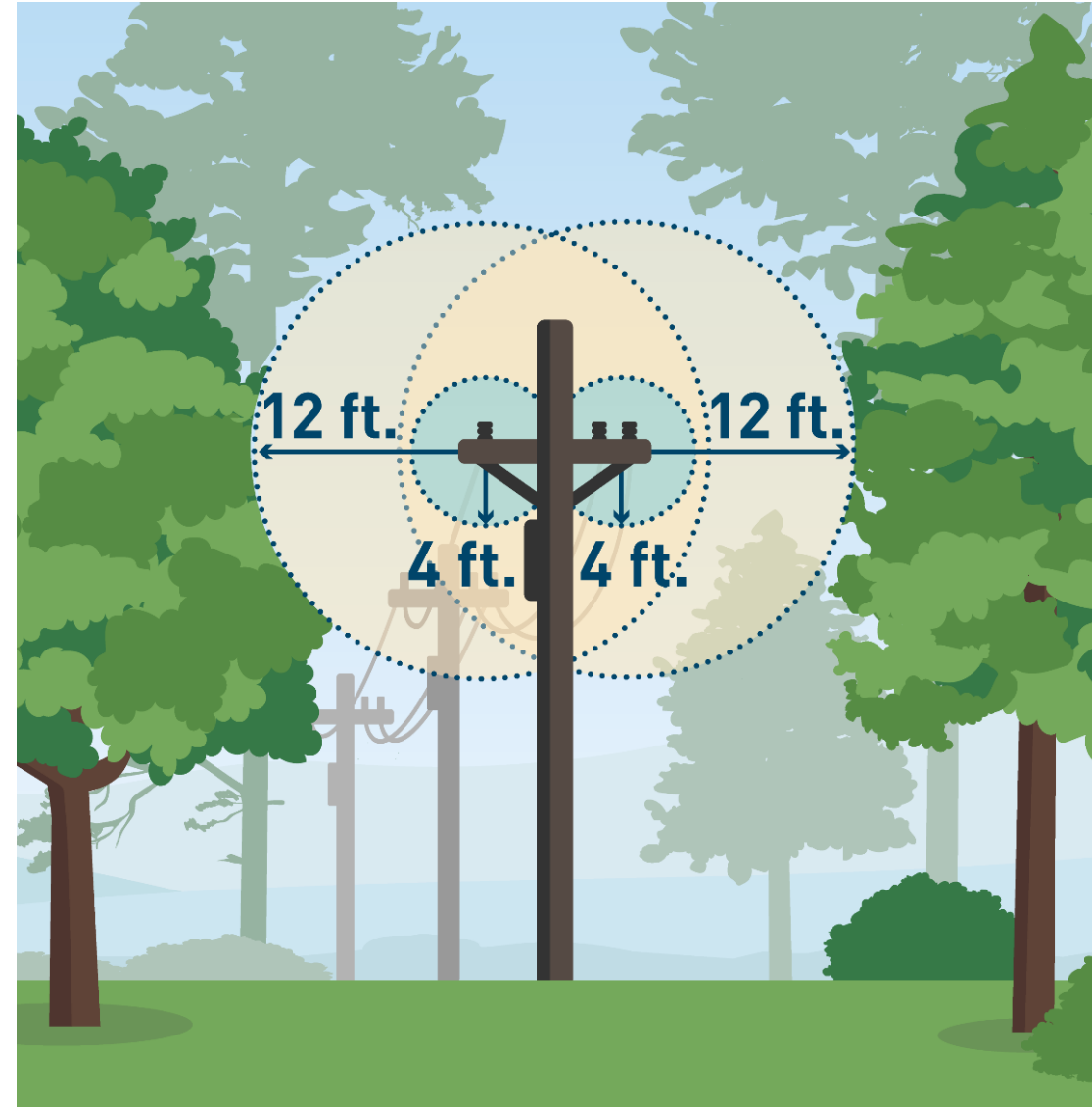
- Once annually

Where This Work Occurs:

- Along all primary electric distribution lines and equipment

What This Work Involves:

- Trimming or cutting down dead, diseased, dying and defective trees that pose a threat to PG&E facilities
- Maintaining required minimum clearances of:
 - 1.5 feet in non-High Fire-Threat Districts
 - 4 feet, with recommended 12 feet minimum at time of prune in High Fire-Threat Districts



Drought and Tree Mortality Program

When This Work Occurs:

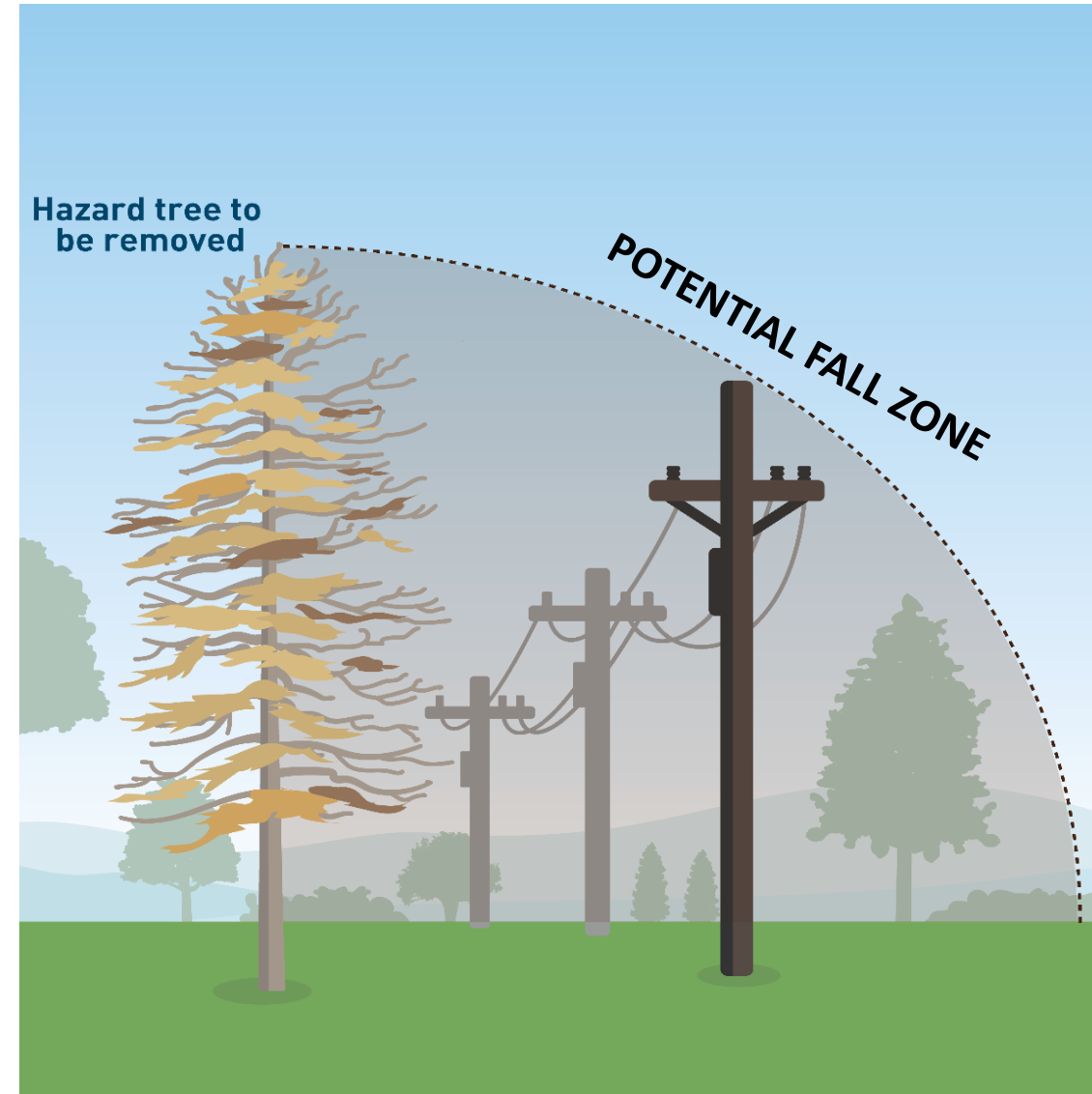
- Once annually, six months after Routine Vegetation Management

Where This Work Occurs:

- Along primary electric distribution lines and equipment in High Fire-Threat Districts

What This Work Involves:

- An additional inspection to ensure clearance requirements
- Cutting down all dead, dying and diseased trees that pose a threat to PG&E facilities



Enhanced Vegetation Management Program

When This Work Occurs:

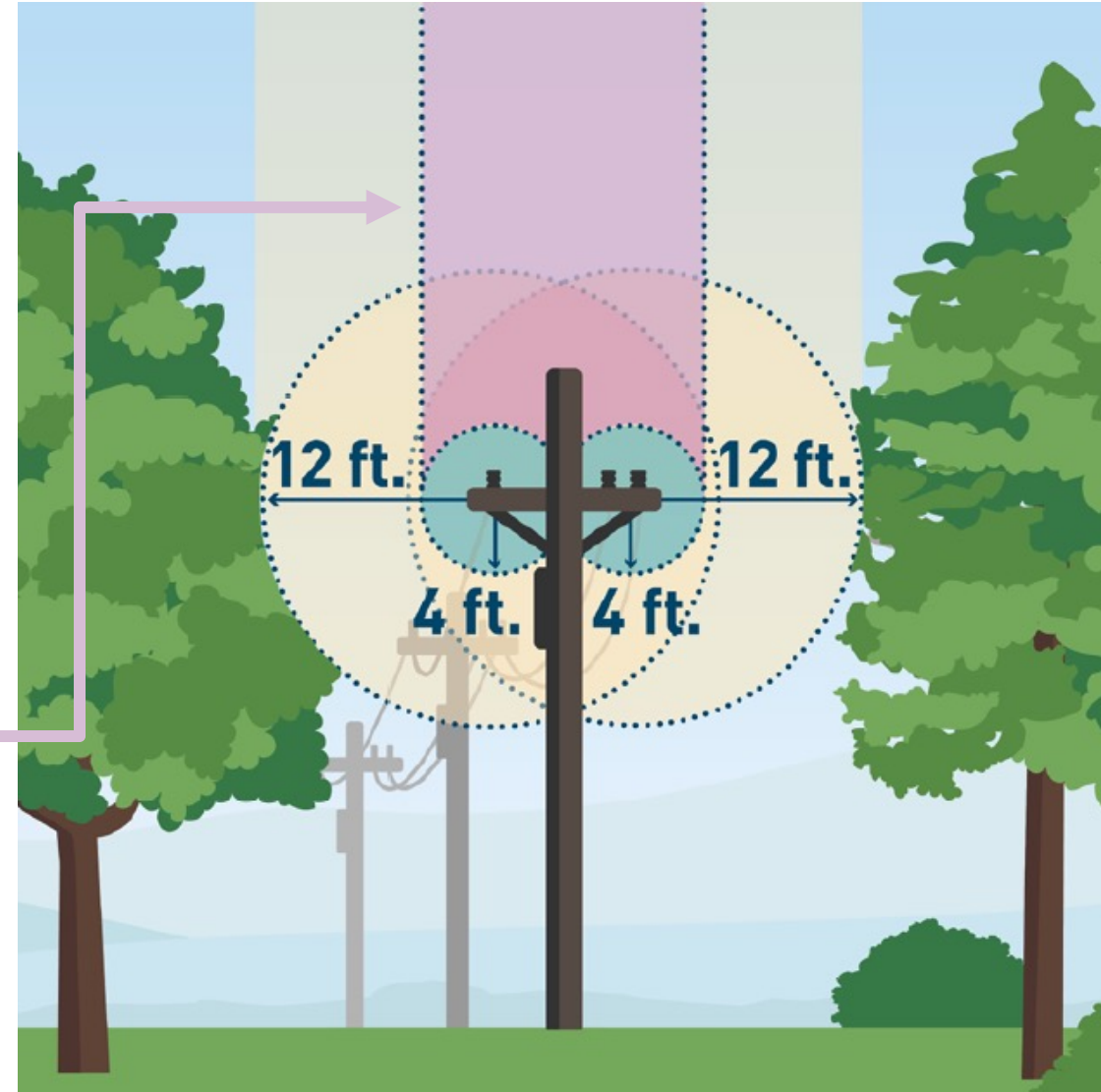
- Once, then maintained by Routine Vegetation Management

Where This Work Occurs:

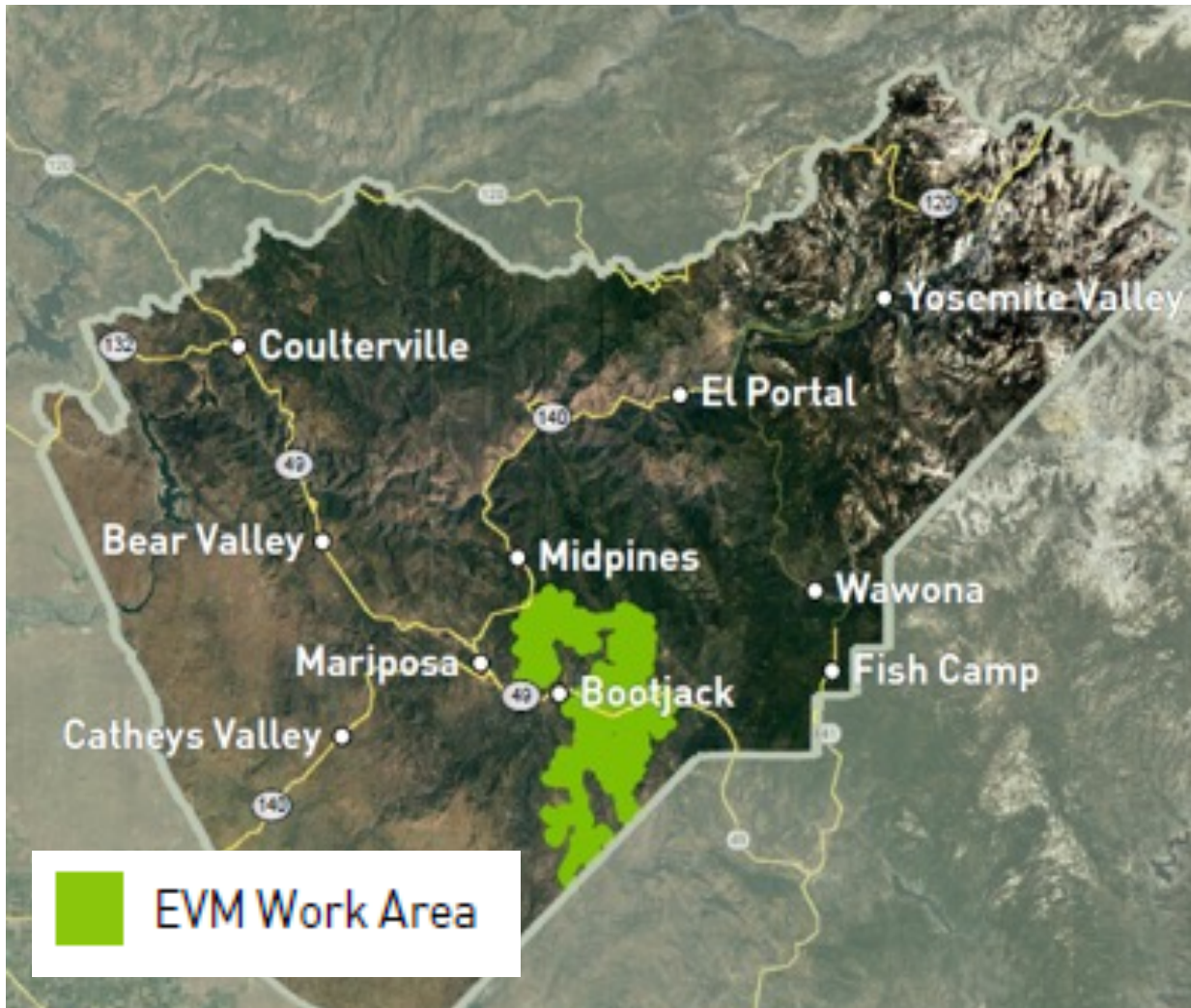
- Along primary electric distribution lines and equipment in High Fire-Threat Districts

What This Work Involves:

- Maintaining minimum required clearances of 4 feet around powerlines, with recommended 12 feet minimum clearance at time of prune
- Trimming limbs and branches that overhang the 4-foot clearance zone
- Evaluating trees that may need to be addressed if they are tall enough to strike electric distribution lines or equipment and cutting down all dead, dying and diseased trees that pose a threat to PG&E facilities



Enhanced Vegetation Management Work in Mariposa County



To keep your community safe, we are addressing vegetation that poses a higher potential for wildfire risk. **This work has begun and will continue throughout the year.**

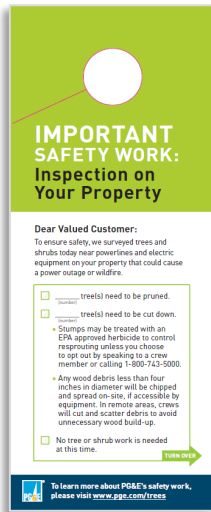
This map is for illustrative purposes only. Work plan is subject to change due to weather, access or other schedule constraints.



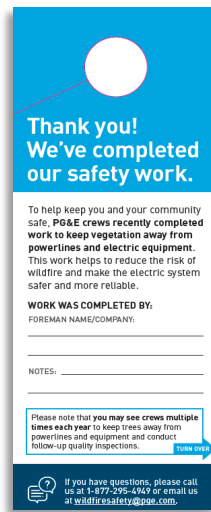
How We're Engaging With Customers

It's important that our customers and communities are informed about our important vegetation management work. We are committed to informing customers before, during and after the work occurring in 2022. Here are a few ways we are keeping customers informed:

Pre-Inspection Door Hanger



Tree Work Complete Door Hanger



Pre-Inspection Postcard



Tree Work Postcard



Mailer

What We're Doing
We know how important trees are to you, your community and the environment. Trees are important to us too, and they are changing every day.

That is why PG&E is carefully and frequently reviewing all trees and shrubs near electric lines to ensure we are addressing those that pose a safety concern.

This work takes place across approximately 100,000 miles of overhead powerlines every year, with some locations inspected multiple times a year.

Together, we can reduce the risk of wildfires and power outages and keep you and your community safe.

What This Work Involves

- Pruning trees to meet or exceed important state vegetation and fire safety standards
- Cutting down dead, diseased, dying or defective trees
- Evaluating the condition of trees that may need to be addressed if they are tall enough to strike powerlines or equipment
- Pruning or cutting down trees and shrubs to increase defensible space or to construct stronger, more resilient electric equipment
- Additional safety work to address vegetation near electric equipment and gas lines

What You Can Expect
PG&E is committed to partnering with our customers and communities to share why this safety work is so important. If any safety work is planned for your property, you can expect phone calls, postcards and door hangers prior to work taking place.

You may see crews conducting:

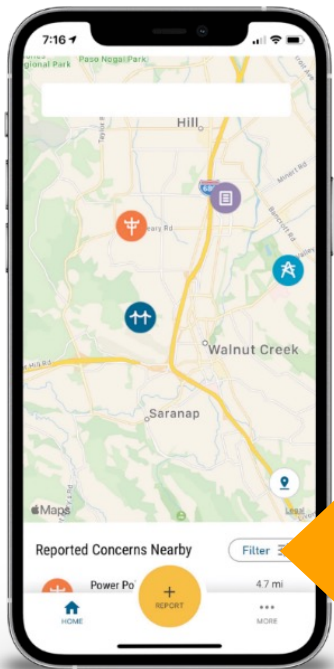
- Inspection**
PG&E or contract inspectors will inspect trees or shrubs to identify any safety concerns.
- Tree Work**
Crews will be on your property following the inspection to complete any necessary work.
- Safety and Quality Checks**
Crews will perform follow-up inspections and ensure work meets required safety standards.

For questions about this work, call us at 1-877-295-4949 or email wildfiresafety@pge.com



Customer and Community Resources

Customers who have questions about our vegetation management work can contact us directly at: **1-800-743-5000**



**“PG&E Report It”
Safety App**
allows customers to
submit photos of non-
emergency safety concerns

pge.com/reportit

To see a map of completed and planned EVM work visit:

pge.com/customerpspsplanningmaps

