



Keeping Trees Away From Powerlines

Overview of Key Programs

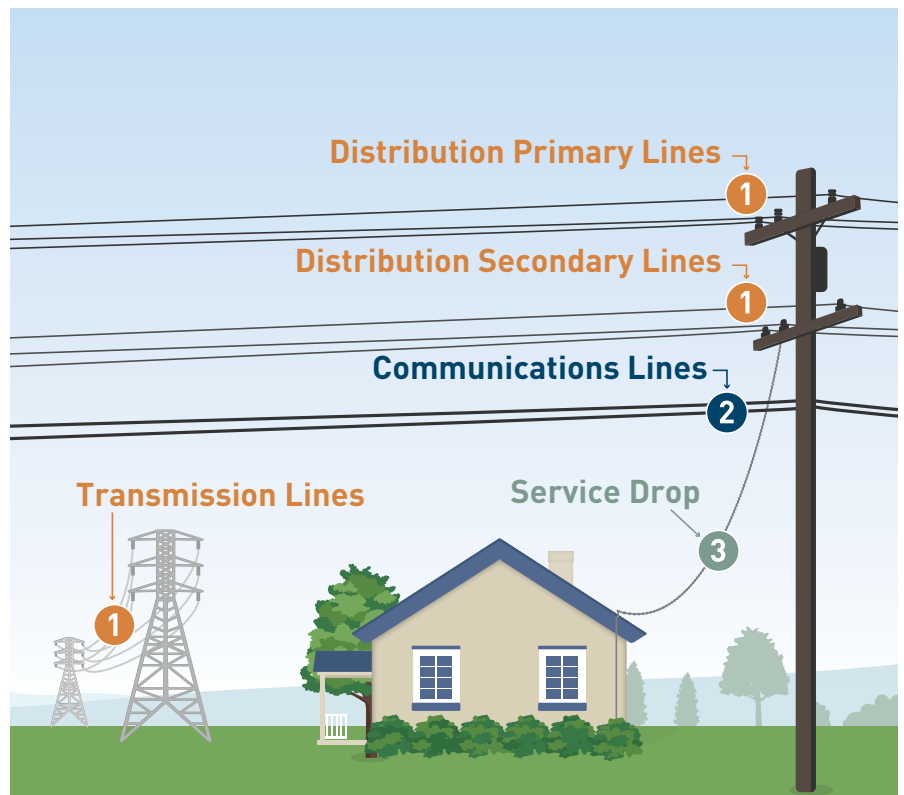
Keeping Customers and Communities Safe

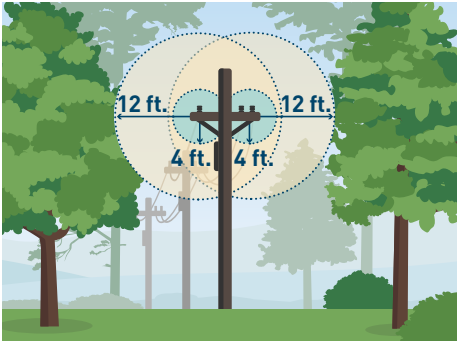
PG&E uses a number of programs to help keep trees and shrubs away from electric powerlines and equipment, which could cause a wildfire or power outage. As part of this safety work, we inspect approximately 81,000 miles of electric distribution lines and equipment.

To continue to provide safe and reliable service to our communities, we perform different vegetation work depending on the type of electric equipment and surrounding environment. High Fire-Threat District (HFTD) areas, as defined by the California Public Utilities Commission, may experience more work throughout the year. The following is an overview of key vegetation management programs along distribution powerlines.

Understanding Utility Lines

- 1 TRANSMISSION AND DISTRIBUTION LINES**
PG&E is responsible for maintaining required clearances around **transmission and distribution lines** and also clears vegetation from **secondary lines** if strain or abrasion are identified.
- 2 COMMUNICATION LINES**
Communications lines for television, internet or phone services are **owned and maintained by the service provider**, not PG&E.
- 3 SERVICE DROP**
Customers are required to maintain a clear route for the electric **service drop wire from the pole** to the service delivery point of a home or business.





Routine Vegetation Management

WORK DETAILS

- Pruning or cutting down dead, diseased, dying and defective trees
- Maintaining a year-round minimum clearance around electric distribution lines
 - 1.5 feet in non-High Fire-Threat Districts
 - 4 feet, with recommended 12 feet minimum at time of prune in High Fire-Threat Districts

WORK FREQUENCY

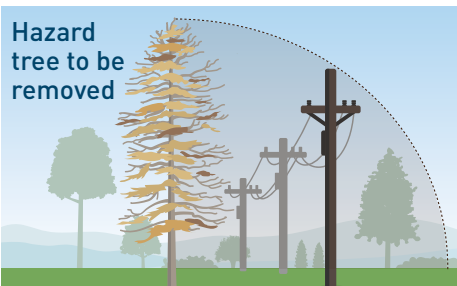
Annually

WORK LOCATION

Along all primary electric distribution lines and equipment

LAW/REGULATION

- General Order (GO) 95, Rule 35
- Public Resource Code (PRC) 4293



Drought and Tree Mortality Response

WORK DETAILS

- Conducting an additional inspection to ensure clearance requirements
- Cutting down all dead, dying and diseased trees

WORK FREQUENCY

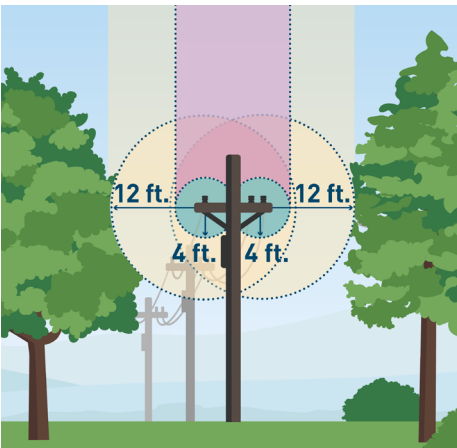
Annually, six months after Routine Vegetation Management

WORK LOCATION

Along primary electric distribution lines and equipment in High Fire-Threat Districts

LAW/REGULATION

- GO 95, Rule 35
- PRC 4293
- CPUC ESRB-4



Enhanced Vegetation Management

WORK DETAILS

- Ensuring a minimum clearance of 4 feet around electric distribution lines, with recommended 12 feet minimum clearance at time of prune
- Pruning limbs and branches that overhang the 4-foot clearance zone
- Cutting down dead, diseased, dying and defective trees
- Evaluating trees that may need to be addressed if they are tall enough to strike electric distribution lines or equipment

WORK FREQUENCY

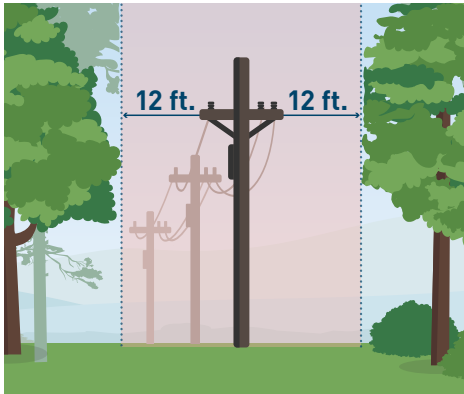
Once, then maintained by Routine Vegetation Management

WORK LOCATION

Along primary electric distribution lines and equipment in High Fire-Threat Districts

LAW/REGULATION

- Expands upon GO 95, Rule 35 and PRC 4293



System Hardening

WORK DETAILS

To support strengthening the electric system with stronger poles, covered powerlines and undergrounding, this work includes:

- Pruning or cutting down dead, diseased, dying or defective trees that may compromise powerlines
- Maintaining a minimum clearance of 4 feet around powerlines and establishing minimum clearances of 12 feet at time of prune
- In some cases, cutting down trees and shrubs within 12 feet of the powerlines in order to safely install new electric equipment

WORK FREQUENCY

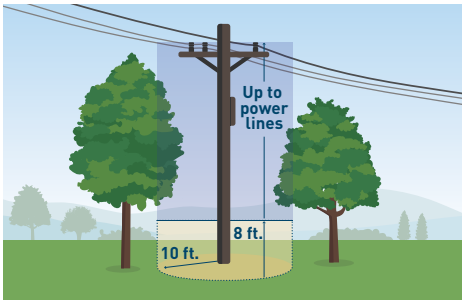
Once, prior to construction

WORK LOCATION

Across electric distribution lines in High Fire-Threat Districts

ENSURING NEW EQUIPMENT MEETS THE FOLLOWING REQUIREMENTS:

- GO 95, Rule 35
- PRC 4293



Pole Clearing

WORK DETAILS

- Removing all flammable material and vegetation in a 10-foot radius around the base of electric distribution poles
- Removing brush, limbs and foliage up to 8 feet above the ground
- Removing dead, dying, diseased or defective vegetation from 8 feet above the ground to the top of electric distribution lines

WORK FREQUENCY

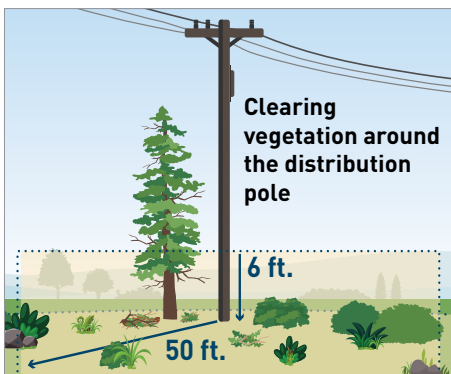
Annually

WORK LOCATION

In State Responsibility Areas (SRAs)

LAW/REGULATION

- PRC 4292



Utility Defensible Space

WORK DETAILS

Within a 50-foot radius, this work includes:

- Clearing brush and shrubs where possible
- Trimming grasses to 4 inches in height
- Removing surface-level fuels such as fallen leaves, needles, twigs, barks, cones and small branches
- Pruning tree branches that are within 6 feet from the ground

WORK FREQUENCY


Annually

WORK LOCATION

In targeted locations in High Fire-Threat Districts

LAW/REGULATION

- Expands upon PRC 4292

 We want you to be aware of this safety work. Customers can expect PG&E to reach out with notifications prior to conducting work. If you have any questions, please contact wildfiresafety@pge.com or 1-877-295-4949. You can also learn more by visiting pge.com/trees.



For translated support in more than 240 additional languages, contact PG&E at: 1-866-743-6589.